

# Our Savior Lutheran Church

F

O

C

U

S



February

Vol. 33 No. 2

2018

GROWING  
TO SERVE

*Be a community that fearlessly follows Jesus to love God's people.*

## Our Savior

### Lutheran Church

745 Front St. South  
Issaquah, WA 98027  
(425) 392-4169  
(425) 392-2946 — fax

#### Email:

office@oslcissaquah.org

#### Webpage:

www.oslcissaquah.org

#### Facebook:

facebook.com/oslcissaquah

#### Twitter:

twitter.com/oslcissaquah

#### Sunday Worship

Service @ 10:00AM

#### Adult Education &

Sunday School @8:45AM  
(September-May)

## Inside this issue...

President's Message	p. 2
V2MOM	p. 3
Ash Wednesday	p. 4
Lenten Soup Suppers	p. 4
Lenten Worship	p. 4
Women's Retreat	p. 5
Education &	
Group Studies	p. 6-7
Social Concerns	p. 8-10
Library News	p. 11
Worship Schedule	p. 12
February Birthdays &	
Anniversaries	p. 12
February Calendar	p. 13
Prayers	p. 14
Worship Assts.	p. 15
Staff Directory	p. 16



## Koinonia Groups

By: Pastor Wesley C. Telyea

*Day by day, as they spent much time together in the temple,  
they broke bread at home and ate their food  
with glad and generous hearts  
~Acts 2:46*

The early church was an interesting mix of believers. They were not what we might call your typical middle-class suburban people. **The early church was a fellowship of people who were broken, people who were weird, people who lived on the edges of society, and people who didn't behave like others thought they should.** Don't believe me? Go look up Matthew 11:19. There we read how Jesus was described as, "a glutton and a drunkard, a friend of tax collectors and sinners." I highly doubt Jesus would have won any sort of community award for being an outstanding citizen.

*Continued on page 2*

## Ash Wednesday—February 14th @ 7:00 PM

On Ash Wednesday, we gather to receive ashes in the sign of a cross on our foreheads. This ritual and every part of our worship on this night draw us beyond our fears of death and failure in this life to the promise of new life in Christ. Here at the beginning of our Lenten season, we hear the invitation to be renewed and reshaped by God.



*Continued from page 1*

**And yet, in spite of their questionable leader and behavior, this odd fellowship grew, and as it grew, it slowly began to change the world.** At first it was just in the lives of individuals. Jesus heals someone and people see a change (John 9:1-12). After enough people begin to see changes small communities begin to follow Jesus and his disciples, and so Jesus commissions the disciples (Matthew 28). Before long large communities are transformed (See Paul's letters). **The lesson here is that individual transformation leads to corporate transformation.** Key to this kind of transformation is the community. Without a community to nurture faith development, transformation seldom happens.

**If we here at OSLC want to fearlessly follow Jesus, we have to tend to our own.** Creating a caring, loving, and intentionally developmental culture is a challenge for any church and OSLC is no exception. **In an effort to take a step towards creating this culture, we are going host a short term small group ministry called Koinonia Groups.** These groups will meet in homes to share a meal, dwell on the word together, and pray for the community. These groups will meet during the seven weeks between Easter and Pentecost, and there will be options to join a day time group or an evening group depending on your schedule. Sign up will take place during Lent.

**In order to prepare for these Koinonia Group, I am looking for four to five small group leaders who would be willing to open their homes and lead a small group.** Don't worry if you do not have any experience leading small groups. There will be a training and I will be available to support you.

Issaquah is changing, and God is challenging us to discern how to use our gifts. My prayer is that these small groups might be the spark that help us fully realize how we can fearlessly follow Jesus.



---

## **Council President's Message:**

*By: Manda Schoen, Council President*

Recently, I was home with a sick child watching Cars 3 (for at least the millionth time!). Lightning McQueen decides he needs to change his training methods in order to compete with the new generation of race cars. Upon arriving at a brand new, state-of-the-art training center, it quickly becomes clear he isn't really willing to change his methods and listen to new ideas. He wants change, but only on his terms. Ultimately, he wants to train the same way, just at a shiny new place with all the latest bells and whistles. Predictably, it doesn't work. Movies have a way of packaging everything up neatly that is not often reflected in real life.

Underneath the discussions Council has had throughout my first year as president has been the question of how we might bring about real change. Sometimes the hardest change is recognizing the need for one. One of the values we chose to help OSLC live out our vision is to be "open to and inconvenienced by the Holy Spirit." Change can certainly be inconvenient! Thus far, I have heard only support for the changes we have made and positive shifts in culture are becoming apparent. A wonderful example is the attitude toward young children in worship – there have been times in the past where I have felt people would like nothing more than for me to bundle my kids off to the nursery so they could worship in peace. More recently, I have heard over and over how wonderful it is to have them there and how much they enrich the life of OSLC. My kids, in turn, know they are valued.

Council is striving to be intentional about the changes we make and are also trying to be proactive rather than reactive. We might not always get it right. The balance between giving something enough time to work and making necessary adjustments to a change that is not working can be difficult to find. We appreciate your continued prayers and support!

## VISION

What do you want to achieve this year?

## VALUES

What principles and beliefs are important to you?

## METHODS

What actions will you take to get the job done?

## OBSTACLES

What challenges do you have to overcome?

## MEASURES

How will you know if you've succeeded?

# OSLC's V2MOM is Our Plan for the Year Ahead:

## Vision:

- Be a community that fearlessly follows Jesus to love God's people

## Values

- Be accessible
- Be faithful to God's word
- Be responsive to God's call
- Be open to and inconvenienced by the Holy Spirit
- Trusting relations

## Methods

- Worship based opportunities
- Service based opportunities
- Fellowship based opportunities
- Learning based opportunities

## Obstacles

- Fear
- Apathy
- Budget
- Church culture
- Culture of society
- Geographic location/traffic

## Metrics

- Push back
- Enthusiasm
- End of program year survey
- How busy the church calendar is
- New groups and relationships forming
- Increased interactions among church members
- How many people take advantage of learning opportunities

February 14 @ 7:00 PM



ASH  
WEDNESDAY



*Wednesday Evenings, February 21—March 21, 2018*

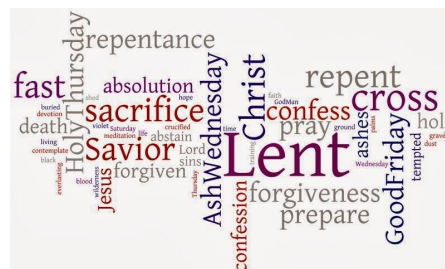
Wednesday Evening Lenten Soup Supper @ 6:00 PM  
Holden Evening Prayer Worship @ 7:00 PM

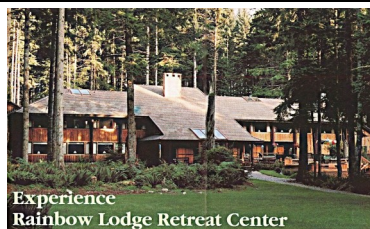
On Wednesday evenings in Lent, February 21 – March 21, we gather at 7:00 p.m. for *Holden Evening Prayer* known for its simple beauty.

Prior to mid-week Wednesday worship, join us for Lenten soup suppers at 6:00 p.m. in Anderson Hall. Through participation in our Wednesday evening times of meal and worship you are invited to discover Lenten practices to renew your spirit and simplify the soul. If you'd like to help with these meals, please text or email Mary Ann Hult, [maryann.hult@gmail.com](mailto:maryann.hult@gmail.com). All are welcome!

## Holy Week Worship Schedule:

March 25th, Palm Sunday Worship @ 10:00 a.m.  
March 29th, Maundy Thursday Worship @ 7:00 p.m.  
March 30th, Good Friday Worship @ 7:00 p.m.  
April 1st, Easter Sunday Worship @ 8:30 and 11:00 a.m.





## Join Us for the OSLC Women's Retreat

*Rainbow Lodge, March 2—4, 2018*

Registrations are due soon! If you are looking for some time away to re-group, re-charge, and re-energize your faith (plus have some fun with other Christian women), this is the event for you! We could all use a weekend off from mom/wife/house duties!

Our theme this year is "The Gift of Encouragement", and our speaker is Barb Boswell, who has been a speaker at our retreat in the past. Previous attendees have had nothing but good things to say about her, so we are excited about having her back again!

The first floor is filling up fast, but we have plenty of room upstairs! As of the newsletter deadline, we are only 1/3 of the way to our minimum of 35 full-time attendees, so hopefully we will gain more registrations soon. Registration forms are available in the Narthex, or you can register online at this link:

### 2018 Women's Retreat Registration Form

A \$50 registration deposit is due by Friday, February 9<sup>th</sup>. You can also come for part of the weekend if you'd rather – the registration form has several options. Please come join us!

If you have any questions about the retreat, please contact Joan Friel via e-mail at [frielj4@comcast.net](mailto:frielj4@comcast.net), or via phone call/text msg. at 425-941-2925.

---

## Women's Retreat Scholarship Fund:

The next OSLC Women's Retreat will be held during the first weekend in March 2018. The fee for the weekend is \$155, and several attendees from last year could only come because we offered them a scholarship. Even just a partial scholarship can help! So please consider donating to the scholarship fund—contributions are tax-deductible.

Checks should be made out to **OSLC** with the words "*Women's Retreat - Donation*" on the memo line, and turned in to the office or dropped into the offering plate on Sunday.

Thank you in advance for your support of the Women's Ministries at OSLC! If you have any questions, please contact Joan Friel via e-mail at [frielj4@comcast.net](mailto:frielj4@comcast.net), or via phone call/text msg. at 425-941-2925.



## Lighted Gift Box Decorations Wanted

Our theme for the 2018 OSLC Women's Retreat is "The Gift of Encouragement", so we'll be decorating with gift boxes, bags, and bows! With that in mind, do you have any of those outdoor light displays leftover from Christmas that are in the shape of a gift-wrapped package? If so, please contact Joan Friel via e-mail at [frielj4@comcast.net](mailto:frielj4@comcast.net), or via phone call/text msg. at 425-941-2925 – she would like to borrow them for the retreat! Thank you



## Christian Education & Small Group Ministries

**Please Note:**  
All Sunday morning Christian education  
classes will be in recess on Sunday,  
February 18th.

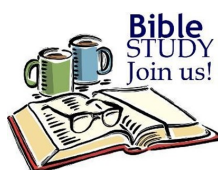


### **Sunday School** 8:45—9:30 a.m.

Sunday School classes for children and youth in Preschool through Grade 7, meet from 8:45—9:30 a.m. in the downstairs classrooms with singing at 9:30 a.m. for 15 minutes. Parents are asked complete the Sunday School Student Information Form available in the classrooms that help teacher and staff in keeping you informed and respond to any questions that you might have.

### **Confirmation Study @ OSLC**

Confirmation study meets at OSLC once a month at OSLC from 11:00—2:00 p.m. This year this study is for 8th and 9th grade students. Their next meeting is Sunday, February 11, 2018. For more information about Confirmation, contact Pr. Wes at wes@oslccissaquah.org.



### **Tuesday Morning Bible Study** @ 10:00 a.m.

Join Pastor Telyea and others on Tuesday mornings at 10:00 a.m. in the library. The current study focus is on the book of Acts. Bring your favorite Bible and a pen to take notes! All are welcome.

### **Sunday Morning Adult Education Hour**

*Thinking Systems & Discovering Clarity*  
February 25—March 18 @8:45 a.m.

Pastor Wes will begin a new adult education class on Sunday, February 25th entitled *Thinking Systems and Discovering Clarity*. Class will meet through March 18th at 8:45 a.m. in Anderson Hall. Please join us!



### **Koinonia Groups Forming**

Would you like to be a part of a short time small group ministry called Koinonia Groups? These groups will meet in homes to share a meal, dwell on the word together, and pray for the community. These groups will meet during the seven weeks between Easter and Pentecost (April 9—May 14, 2018.) There will be options to join a day time group or an evening group depending on your schedule. Sign ups will take place during Lent. If you are interested in hosting a small group in your home, please contact Pr. Wes at wes@oslccissaquah.org.



### **Mission Quilters**

Join us Wednesday mornings from 9:30 a.m. until noon in Anderson Hall and assist us making quilts.

The Mission Quilters make simple patchwork quilts that are donated to people in need. Contact the church office for more information, 425-392-4169, ext. 100.



## Monthly Women's Bible Studies:

Hope and Faith Circles are monthly women's Bible study groups that meet in participants homes from September until June. These studies follow the Bible study found in the Lutheran magazine, *Gather*.

### Hope Circle

*Friday, February 16th*

*9:30 a.m.*

Hope Circle will meet Friday, February 16, 2018 at the home of Dianne Kleingartner. For more information on Hope Circle or for carpooling information, please contact Sandy Aldworth at (425) 837-1233 or [mtnlady@comcast.net](mailto:mtnlady@comcast.net).

### Hope Circle

*Monday, February 19th*

*1:30 p.m.*

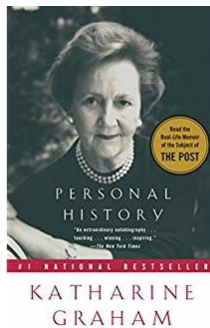
On Monday, February 19, 2018, Faith Circle will meet at OSLC. Faith Circle meets on the third Monday of each month, at 1:30 p.m. If you need more information or would like to join Faith Circle, please contact Gwynn Wilkinson at [gwynnw@gmail.com](mailto:gwynnw@gmail.com).



### Prayer Shawl Ministry

*February 11th @ 8:45 am*

The prayer shawl ministry provides knitted or crocheted shawls to those who are hospitalized, sick or just need a hug. This ministry will meet on Sunday, February 11th at 8:45 a.m. in Anderson Hall to knit, crochet and visit before worship. If you knit or crochet, or want to learn, please join them. Yarn and patterns are available. Contact Nancy Anderson for more information, [nsanderson888@gmail.com](mailto:nsanderson888@gmail.com).



### OSLC Book Club

*March 12th @ 7:30 p.m.*

*Issaquah's Barnes & Noble Bookstore*

The next gathering for the book club will be on Monday, March 12th at 7:30 p.m. at the Issaquah Barnes and Noble to discuss the book, *Personal History*, by Katherine Graham. Katherine Graham, born into wealth and privilege, became the head of the Washington Post upon the suicide death of her manic depressive, alcoholic husband. This is the story of a newspaper's rise to power, and of Katharine's rise from a subservient daughter and wife to a powerful woman in her own right. Graham writes about her personal life and the lives of others, ranging from presidents to household help, with sympathy and grace.

## **Social Concerns Committee / THANK YOU OSLC!**

*By Kate Gagnon*

First of all a big THANK YOU goes out to so many people who helped to make the Christmas Season brighter for so many less fortunate people in our community.

The Giving Tree in the narthex was on display throughout Advent and many people took ornaments and returned gift cards to be used throughout the year. The gift cards will be given as needed to families in the church who find themselves in crisis, and to Vine Maple Place, Compassion House, Safe Parkers, The Holiday Gift Barn and others. Thank you for your generosity!

Again Anderson Hall was used as the drop-off and pick-up place for Lunch for the Break a program our church does in collaboration with the Issaquah Food and Clothing Bank prior to longer school vacations. Members of the Social Concerns Committee assisted with assembling boxes of food on Dec. 18th and giving it away on Dec. 19th. Another big thank you is due here especially to the volunteers who carried heavy boxes. As our committee ages, this is a task that is very hard for some of us to do! 460 school aged children received boxes of food to eat during the Christmas Break when free and reduced breakfasts and lunches were not available. Not all of these children were served from Anderson Hall as there are three pick-up sites. The Issaquah Library also lent a hand by furnishing books that children could take home with them. Another Lunch for the Break is scheduled for Feb. 14th and 15th. We can always use help.

Members of our committee were involved in shopping and helping at the Holiday Gift Barn in early December. This is a program put on by the Issaquah Food and Clothing Bank to provide toys, clothing, and other gifts for Christmas for low income families with children.

The committee is hard at work on preparing the preschool room to be ready for the churches partner in service to the community. On January 7th the preschool room was opened to the church for anyone wishing to take things for their children or grandchildren to use. Passage Point and Vine Maple Place had the opportunity to take things that they could use in their children's programs prior to this. The committee is now in the process of deciding what to do with some of the left over things. The request for proposals became public information on December 18th and we are receiving proposals from social service agencies in the area. During the month of January the task force will be reviewing proposals and should have a recommendation about our new partner to the council by February 13th.

Again, thank you to all who helped by contributing gift cards, cooking for the meals program, packing boxes, lifting boxes, sorting out the preschool, shopping for the Gift Barn, etc. We are always looking for new members to join our committee if any of these projects sound interesting to you. Come and join us as we work to Fearlessly Follow Jesus in Loving God's People.

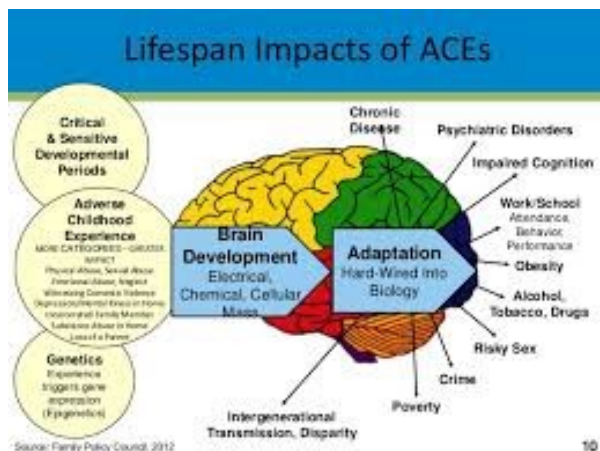




## Food List for Lunch for the Break

Help a local family bridge the food gap over the school break by filling a food box. The list below is the official Issaquah Food Bank shopping list of items that go into each box. Please stick to the list, as we want all food boxes to be fair and equitable. Bring boxes to OSLC by **Wednesday, February 14, 2018**. The food bank has a variety of ways for you to donate to LFTB. You can shop using this list, or, if it is easier, you can order a box of these food items to be delivered to OSLC directly. Just go the foodbank's website at <https://www.issaquahfoodbank.org/> and click on Get Involved. Select Special Programs and then Lunch for the Break. Follow the simple steps to order your food box.

Types of Food	Amount	Size (guidelines only!)	Cost Estimate (from safeway.com)
<b>Packaged/Canned Food:</b>			
Oatmeal or cereal	1	18 oz. canister or box	\$4.39
Progresso or Chunky canned soup (chicken noodle is popular with kids!)	2	18.5-19 oz. cans (soup) or 15 oz. cans (pasta)	\$5.20
Canned tuna/salmon/chicken	2	7-12 oz. can	\$7.00
Spaghetti Os (or a similar canned pasta)	2	15 oz. can	\$3.00
Canned black, pinto or refried beans	2	16 oz. can	\$3.00
Peanut butter	1	16 oz. jar	\$3.50
Jelly	1	12-18 oz jar of jam/jelly	\$3.50
Cup of Noodles	6	2.25 oz. cups	\$1.99 for family pack
<b>Pasta/Grains:</b>			
Box macaroni and cheese	4	5.5-6 oz. boxes	\$4.00
Corn or flour tortillas	1	8-24 tortillas	\$3.00
<b>Snacks:</b>			
Crackers	1	16 oz. box	\$5.50
Fruit or applesauce cups	6 pack	4-4.4 oz. cups	\$3.00
Granola bars	Box of 6	6 bars	\$3.00
Juice or milk boxes	Box of 6-10	6-10 boxes	\$3.00
		<b>Total price range:</b>	<b>Approx. \$50 per box</b>



## Social Concerns Update—Adverse Childhood Experiences

I have a plaque in my home that says, "You may be only one person in the world but you may mean the world to one person." I bought it because it really spoke to me. I knew I wasn't capable of being a Mother Teresa or Ghandi but I knew that I could help people one at a time and sometimes just a small kindness could be huge to someone else. Where are you being called?

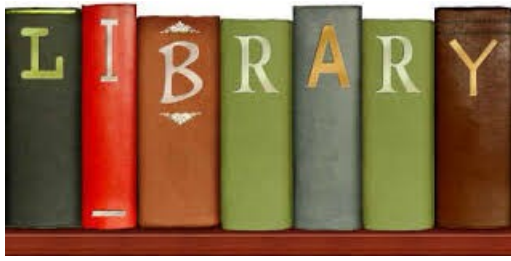
During the fall we had a number of events designed to educate the congregation about ACEs (Adverse Childhood Experiences). We watched the movie, Paper Tigers, and learned more about the problems ACEs kids face in school and how some schools are trying to meet their needs.

We had speakers from several agencies who talked about ways their agencies are attempting to help ACEs kids. We heard from Olive Crest, a Christian agency that helps provide homes for children on a short-term basis when parents need help. We heard from Passage Point, an agency that provides transitional housing for people leaving prison and reuniting with their children. We heard from Compassion House an agency that provides three transitional homes for mothers leaving domestic violence and helping them to get back on their feet to independence. We heard from VOICE mentoring, a program in the Issaquah public schools that coordinates matching mentors with children at risk in school. Our speaker from VOICE told us about one little girl who had the same mentor from age seven through high school graduation. Think of the positive impact that volunteer must have had on that little girl through all those years. She might have meant the world to that little girl.

I am wondering what impact this had on the congregation? Where did you feel led? Did anyone feel led to be a VOICE mentor and mean the world to one little boy or girl by visiting them at school once a week? Is there a young family in the church or an "empty nester" family that felt called to take in just one more child just for a few days here and there? I think it was clear from our town hall discussions that many of us felt called to be support people to a family that would fearlessly follow Jesus in doing so. If there is not a family in our church that can take in a child, do we feel led as a congregation to commit to being a support congregation to another family in another church who is providing a home for children in need? Please prayerfully consider these questions and let me know where you feel God is leading you. (I can be reached by email at [kjgagnon@yahoo.com](mailto:kjgagnon@yahoo.com).)

Where is God calling you to fearlessly follow Jesus in loving God's people???

In Christ,  
Kate Gagnon



## OSLC Library News

By: Sharon Mantei

I was tucking away our Christmas books and decorations a few days ago, leaving many empty spaces on the library shelves. What should I put out to show our library visitors what a wide selection of subjects we have to choose from and perhaps interest them in some wintertime reading? I went to the "new additions" section and the first four I pulled out seemed to fill the bill. They are now on display on a library shelf near their Dewey decimal number. Here they are:

- *God's Guest List; Welcoming Those Who Influence Our Lives* by Debbie Macomber (302-MAC)
- *Allah - A Christian Response* by Miroslav Volf (261.2-VOL)
- *Praying Like Jesus; The Lord's Prayer in a Culture of Prosperity* by James Mulholland (248.3-MUL)
- *Reluctant Saint; The Life of Francis of Assisi* by Donald Spoto (B-FRA)

Of course, there are so many more to choose from, plus wonderful stories in fiction and biographies and great choices for your little ones or middle school readers in their special sections. Come and see! The quietness and slower pace of winter is a great time to fulfill that New Year's resolution to read a "real book" in 2018!



Have you noticed any change in the coffee we serve at Coffee Hour? We have taken the suggestion of our Global Missions Committee and begun purchasing coffee from Lutheran World Relief Farmers Market! This is a new initiative by LWR that sources coffee directly from the farmers, providing a more stable (and better) income to help them support their families and improve their farming practices. Among these smallholders are

independent coffee producers who face considerable obstacles and challenges in maximizing their crop yield and capturing its full value in the marketplace.

If you want to learn more, or buy LWR coffee for your home or office, check out the website: [www.lwrfarmersmarket.org](http://www.lwrfarmersmarket.org).

The next cup of coffee you sip, do so knowing that you are actively participating in OSLC's global mission efforts through LWR.



2/1	Cassidy Rimmer	2/13	Anne Ellet
	Juliana Kampf	2/14	Kate Gagnon
2/2	Lindy Downey		Colae Migge
2/3	Nancy Anderson	2/16	Sandy Aldworth
2/4	Jerry Welch		Scott Cron
2/5	Bruce Byrkett	2/17	Carol Johnson
2/6	Sue Johnson	2/22	Ashley Montague
2/7	Rowan Hinds		Bev Price
	Susan Ferrarini		Susan Hubly
2/8	Diane Nelson	2/24	Randy Halter
	Nathan Gardner	2/26	Jennifer Papp
2/9	Carolyn Tierney	2/27	Jasper Fuhs
	Jocelyn Tierney	2/28	Myles Cash
2/10	Bill Suttmeier		Sam Gillin
2/12	Cheryl Leiter		
	Don Miller		
	Marilyn Carlson		
	Noah Telyea		



2/12	Dag & Beth Garrison
2/23	Michael & Margot Inman
2/28	Talton & Carol Johnson



## Eagle Scout Court of Honor

Thomas Zhu-Sordahl requests the pleasure of your company at his Eagle Scout Court of Honor on Saturday, April 21, 2018 at Faith United

Methodist Church, 3924 Issaquah-Pine Lake Road S.E., Issaquah, WA 98029 beginning at 1:30 P.M.

Please RSVP to [rsordahl@comcast.net](mailto:rsordahl@comcast.net) or 425-761-0689 by March 31st.

## Worship Schedule

### Sun., February 4—5th Sunday after Epiphany

First Reading:	Isaiah 40:21-31
Second Reading:	1 Corinthians 9:16-23
Gospel:	Mark 29-39

### Sun., February 11—Transfiguration of Our Lord

First Reading:	2 Kings 2:1-12
Second Reading:	2 Corinthians 4:3-6
Gospel:	Mark 9:2-9

### Sun., February 18—1st Sunday in Lent

First Reading:	Genesis 9:8-17
Second Reading:	1 Peter 3:18-22
Gospel:	Mark 1:9-15

### Sun., February 25—2nd Sunday in Lent

First Reading:	Genesis 17:1-7,15-16
Second Reading:	Romans 4:13-25
Gospel:	Mark 8:31-38

# February 2018



Sun	Mon	Tue	Wed	Thu	Fri	Sat
	<div style="border: 1px dashed black; padding: 5px;"> <p>OSLC facility use printed in non-italics. Community facility use printed in italics.</p> </div>			<b>1</b> 7:45 AM TOPS (Upstairs Education Room) 10:00 AM AI Anon (Upstairs Education Room) 10:00 AM Staff Meeting (Narthex) 5:30 PM Lego League (Anderson Hall)	<b>2</b> 1:00 PM CiC Study Group (Narthex) 3:15 PM Daniel Plan (Narthex) 5:00 pm RFP DUE DATE	<b>3</b>
<b>4</b> Jiyoung Lee Installed as Organist Church Council Installation  8:45 AM Sunday School (Downstairs Ed Rooms) 10:00 AM Worship	<b>5</b> 12:00 PM OA (Upstairs Education Room) 7:00 PM Boy Scout Troop 676 (Anderson Hall)	<b>6</b> 10:00 AM Bible Study (Library) 7:00 PM AA (Anderson Hall) 7:00 PM Jubilate Rehearsal (Sanctuary)	<b>7</b> 10:00 AM Stephen Saunders Memorial Service 7:00 PM Chancel Choir (Sanctuary)	<b>8</b> 7:45 AM TOPS (Upstairs Education Room) 9:00 AM Issaquah PTSA Council (Anderson Hall) 10:00 AM AI Anon (Upstairs Education Room) 5:30 PM Lego League (Anderson Hall)	<b>9</b> 1:00 PM CiC Study Group (Narthex) 3:15 PM Daniel Plan (Narthex)	<b>10</b>
<b>11</b> 8:45 AM Prayer Shawl Ministry (Anderson Hall) 8:45 AM Sunday School (Downstairs Ed Rooms) 10:00 AM Worship 11:00 AM Confirmation Meeting #6	<b>12</b> 12:00 PM OA (Upstairs Education Room) 1:30 PM Parkinson's Support Group (Anderson Hall) 7:00 PM Boy Scout Troop 676 (Anderson Hall)	<b>13</b> 10:00 AM Bible Study (Library) 11:00 AM Global Missions Committee (Narthex) 5:30 PM Issaquah Meal Program @ Fire Station 7:00 PM Council Meeting (Narthex) 7:00 PM AA (Anderson Hall)	<b>14</b> ASH WEDNESDAY Food for the Break Food Collection  9:30 AM Mission Quilters (Anderson Hall) 7:00 PM Ash Wednesday Worship 7:30 PM Chancel Choir (Sanctuary)	 <b>15</b> Food for the Break Food Distribution  7:45 AM TOPS (Upstairs Education Room) 10:00 AM AI Anon (Upstairs Education Room) 12:00 PM March Focus Newsletter Deadline 5:30 PM Lego League (Anderson Hall)	<b>16</b> 9:30 AM Hope Circle @ the home of Dianne Kleingartner 1:00 PM CiC Study Group (Narthex) 3:15 PM Daniel Plan (Narthex)	<b>17</b>
<b>18</b> 10:00 AM Worship	<b>19</b> President's Day Holiday OSLC Office Closed  12:00 PM OA (Narthex) 1:30 PM Faith Circle (Anderson Hall)	<b>20</b> 10:00 AM Bible Study (Library) 3:00 PM Nourishing Network (Anderson Hall) 7:00 PM AA (Anderson Hall) 7:00 PM Jubilate Rehearsal (Sanctuary)	<b>21</b> ISD WINTER BREAK  9:30 AM Mission Quilters (Anderson Hall) 6:00 pm Lenten Soup Supper (Anderson Hall) 7:00 PM Mid-Week Lenten Worship 7:30 PM Chancel Choir (Sanctuary)	<b>22</b> 7:45 AM TOPS (Upstairs Education Room) 10:00 AM AI Anon (Upstairs Education Room) 5:30 PM Lego League (Anderson Hall)	<b>23</b> 1:00 PM CiC Study Group (Narthex) 3:15 PM Daniel Plan (Narthex)	<b>24</b>
<b>25</b> 8:45 AM Adult Education Hour (Anderson Hall) 8:45 AM Sunday School (Downstairs Ed Rooms) 10:00 AM Worship 11:30 AM RFP Town Hall (Anderson Hall)	<b>26</b> RFP WINNING BIDDER ANNOUNCED  12:00 PM OA (Upstairs Education Room) 7:00 PM Boy Scout Troop 676 (Anderson Hall)	<b>27</b> 10:00 AM Bible Study (Library) 7:00 PM AA (Anderson Hall)	<b>28</b> 9:30 AM Mission Quilters (Anderson Hall) 6:00 pm Lenten Soup Supper (Anderson Hall) 7:00 PM Mid-Week Lenten Worship 7:30 PM Chancel Choir (Sanctuary)			



## **We remember in prayer...**



### **We remember in prayer OSLC members:**

Sandy Aldworth; Dave Carlson; Marilyn Carlson; Ken DeCamp; Gene Elfstrom; Emily Gacek; Steve Gacek; Kathy Guthmiller; Scott Hafso; Carol Harbolt; Ray Harbolt; Jeff Hendrickson; Margot Inman; Duane Jacobson; Marian James; Talton Johnson; Josee Jordan; Florence Kinnune; Jeanne Kuipers; Jessica Liepins; Alice Lewis; Jeannie Lindquist; Vern Lindquist; Kimberly Montague; Jerry Nack; John Pass; Doug Patur; Nancy Peterson; Dorothy Soland; Randi Strom; Selma Thompson; Gerald Welch; Gwynn Wilkinson; Louise Yockey.

### **We ask for peace and comfort for those mourning the death of loved ones:**

Steve Saunders; Merrily (Johnson) Gottner; Richard Usselman (father/father-in-law of James and Glenna Usselman); Claire Brady; Mabel Gunderson (Janet Heck); Bob and Judy (Cheryl Neeb); Orlie Crist (Cheryl Neeb); Patti Price (Cheryl Neeb);

### **We pray for expectant mothers:**

Ashley Costello (Cheryl Hauser); Nicole Koenig (granddaughter of Sandy Aldworth); Lana Wallace (Cheryl Hauser); Kristen Lynch (Janet Heck); Kirsten Wood Weber (daughter of Joanna and Randy Wood); DeLainey Bodell (granddaughter of Judi Case)

**We pray for members and friends serving in the Military; Fire and Police Department personnel; Emergency Room personnel.**

### **We prayer for safety and strength to those living in the wake of all disasters.**

Especially all who are affected by hurricanes, earthquakes and the subsequent flooding, wildfires; strength and safety for all who serve as first responders.

### **We pray for our missionaries and global missions:**

Henrik & Patty Christopherson. For the congregations in Chiclayo, Peru: **Pepe** at Las Brisas, **Merci** in San Antonio and **Harold** at Las Lomas. **MaaSae Girls Lutheran Secondary School** in Monduli, Tanzania.

### **Thanksgiving:**

For the joyous birth of **Harper Linn Baseler**, daughter of TJ and Casey and granddaughter of Randy and Linda Baseler.

*Prayer is putting our faith into action, and prayer is pleasing to God. Link up with our prayer chain if you have a need or if you want to share a thanksgiving or praise. Call Shirley Witsoe, (425) 413-6754.*

# February 2018 Worship Assistants

Thank you for sharing your gifts with us!

## Assisting Ministers

2/4 Sue Friddell  
2/11 Connie Fletcher  
2/18 Judi Case  
2/25 Debby Beck

## Communion Assistants

2/4 Mary Fricke  
Sue Friddell  
2/11 Connie Fletcher  
Alice Lewis  
2/18 Judi Case  
Jane Shen  
2/25 Debby Beck  
Stacy Smith

## Ushers

2/4 Mike & Sandy Nygaard  
2/11 Don Chaney  
*Open*  
2/18 Schoen Family  
2/25 Kirsten Olshausen  
*Open*

## Greeters

2/4 Mary Fricke  
Diane Nelson  
2/11 Don & Jean Chaney  
2/19 Bonnie Brice  
Don Miller  
2/25 Selma Thompson

## Council Hospitality

2/4 Jon Smith  
2/11 Bill Cash  
2/18 Jacki Marx  
2/25 Sue Johnson

## Sound Engineers

2/4 Miranda Smith  
2/11 David Hersey  
2/18 David Hersey  
2/25 Myles Cash

## Altar Guild

2/4 Jane Shen  
2/11 Jacki Marx  
2/18 Mary Fricke  
2/25 Karen Hansen

## Bread Bakers

2/4 Manda Schoen  
2/11 Leslie Waltzer  
2/18 Connie Fletcher  
2/25 Heidi Fuhs

## Story Time Leaders

2/4 *Open*  
2/11 *Open*  
2/18 *Open*  
2/25 *Open*

## Acolytes

2/4 *Open*  
2/11 *Open*  
2/18 *Open*  
2/25 *Open*

## **Worship Assistant Contact Information:**

Assisting Ministers & Communion Assistants:  
Shari Lundberg 425-392-4169, ext. 105  
Ushers: Bill Suttmeier 425- 891-9833  
Greeters: Mary Fricke 425-313-1582  
Council Hospitality: Sue Friddell 425-392-9730  
Sound Engineers: Jonathan Smith 425-392-3499  
Altar Guild & Bread Bakers:  
Karen Hansen, 425-454-2420  
Jane Wuest, 425-641-4252  
Acolytes: Heidi Fuhs 425-369-2435  
Story Time Leaders: Jennifer Tolo 425-898-8517

## **Ash Wednesday (February 14th) Worship Assistants @ 7:00 PM**

Assisting Minister: Joan Friel  
Communion Assistants: Joan Friel, Jane Shen  
Acolyte: *Open*  
Ushers: *Open*  
Altar Guild: Jane Wuest  
Bread Baker: Jane Wuest  
Sound Engineer: Jonathan Smith



## ***Our Savior Lutheran Church***

745 Front Street South

Issaquah, WA 98027

**(425) 392-4169 office**

(see extensions below)

**(425) 392-2946 fax**

Stay connected with OSLC through our Website, on Facebook or through Twitter:

**Website: [www.oslcissaquah.org](http://www.oslcissaquah.org)**

**Facebook: [www.facebook.com/oslcissaquah](http://www.facebook.com/oslcissaquah)**

**Twitter: [twitter.com/oslcissaquah](http://twitter.com/oslcissaquah)**

All information for the *Focus* newsletter is **due by noon on the 15th of each month**, unless noted otherwise. Please email items to [office@oslcissaquah.org](mailto:office@oslcissaquah.org) on or before the deadline.

## **OSLC STAFF DIRECTORY**

**745 Front St. S., Issaquah, WA 98027**

**425-392-4169**

All staff can be reached at the above telephone number and at the extensions and email addresses below:

Rev. Wesley Telyea.....	Lead Pastor
Ext. 106	<a href="mailto:wes@oslcissaquah.org">wes@oslcissaquah.org</a>
Scott Hafso.....	Director of Worship & Music
Ext. 103	<a href="mailto:bellevuer@gmail.com">bellevuer@gmail.com</a>
Janet Heck .....	Parish Administrator
Ext. 100	<a href="mailto:janeth@oslcissaquah.org">janeth@oslcissaquah.org</a>
Shari Lundberg .....	Office Assistant
Ext. 105	<a href="mailto:sharil@oslcissaquah.org">sharil@oslcissaquah.org</a>
Dr. Jiyoung Lee.....	Parish Organist
	<a href="mailto:sally@myuw.net">sally@myuw.net</a>
Beth Carroll... ..	Accountant
	<a href="mailto:carrollaccounting@comcast.net">carrollaccounting@comcast.net</a>
Katherine Mitchell....	Lutheran Counseling Network
	(425) 455-2960, Ext. 6
	<a href="mailto:kmitchell@lutherancounseling.net">kmitchell@lutherancounseling.net</a>